

ARTIFICIAL VAGINA(AV) FOR GOATS

RL31002 ANIMAL BIOTECHNOLOGY

STRUCTURE OF AN ARTIFICIAL VAGINA OF GOAT

Component of AV set is listed below:

1. Latex inner lining
2. Latex cone: attach at the bottom of the cylinder opening
3. Rubber cylinder
4. Protective cover for collection tube
5. Graduated/ collection tube
6. Rubber ring
7. Water inlet/ air blow

The AV set is completed after the water is filled up through the water inlet and blown to make it dilate. Water used must be set at 45 degree Celsius. Maintain the AV temperature by frequently checking using the thermometer or putting the AV set in the incubator prior to semen collection. Or else, change it with new hot water.

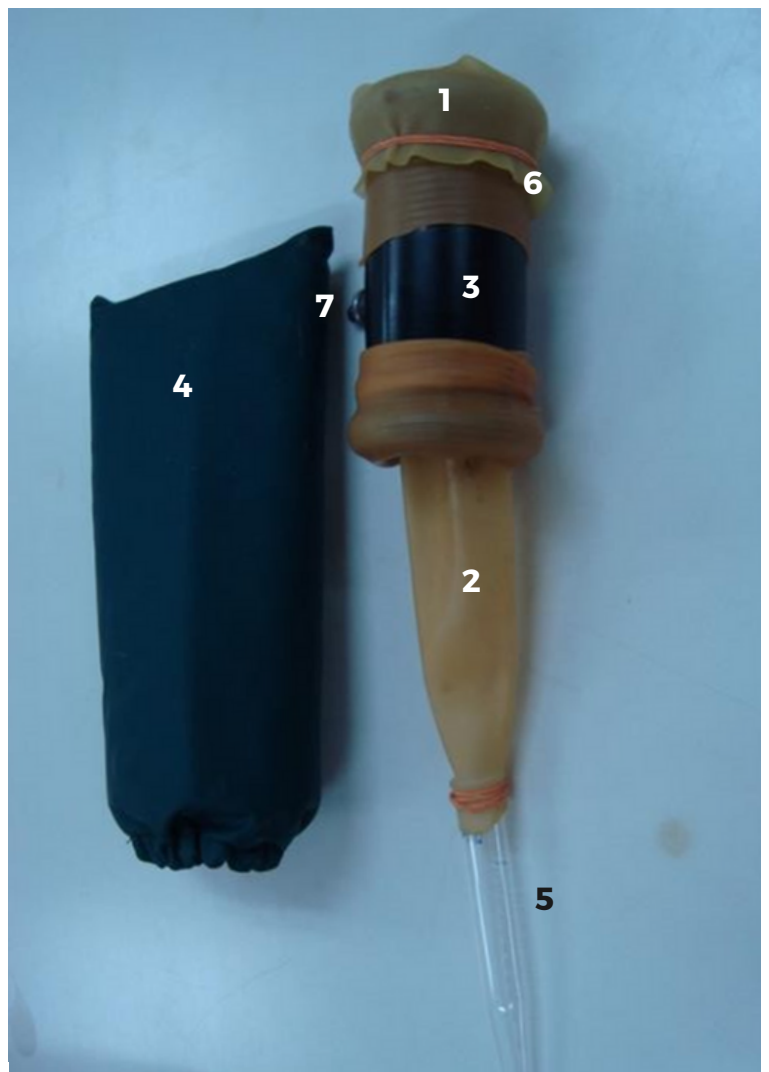


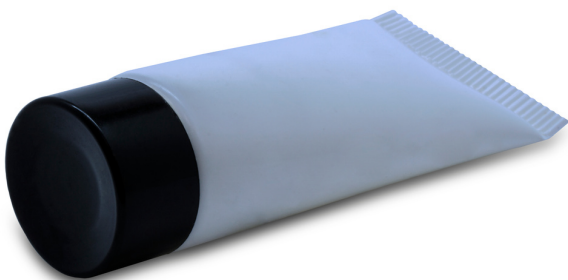
Figure 1: Component of an artificial vagina(AV)

OTHER MATERIALS

Prior to semen collection, a thermometer, ice box container and also hot water must be prepared. Set the workstation first. The workstation could be a small clean table which is enough to put AV set and other equipment.

Always bring along the electric kettle to prepare the hot water. You need a jug or beaker to pour the prepared water (45C) into the AV water inlet.

For the cool box/ polystyrene box, water is filled up just enough to submerge the semen sample and set at 37C. To do that, a tube rack is needed to secure the semen sample. Always close the lid to keep the temperature constant.



NON-SPERMICIDAL LUBRICANT



ELECTRIC KETTLE

To prepare the hot water



100C THERMOMETER

To keep the AV temperature at 45C



POLYSTYRENE/ COOL BOX

for transportation of the sample to the laboratory (set at 37C)