

A GLANCE AT TAMU SITE IN SABAH: TAMPARULI

JARATIN LILY*

WINNIE KINSUI

*Corresponding Author: jaratin@ums.edu.my

Brief information on Tamu Tamparuli

Day : Wednesday
Venue : Tamparuli Town
Time : 6am-2pm

Tamu Tamparuli is a traditional open-air market in Tamparuli town, Sabah, Malaysia. "Tamu" is a local name for an open market or bazaar. This weekly market takes place every Wednesday and has become a significant cultural and economic event in the area. The market brings together local farmers, traders and artisans selling a variety of goods including fresh produce, local delicacies, handicrafts, traditional medicine, clothing and textiles and many others.

Tamu Tamparuli serves as a hub for cultural exchange and trade, attracting both locals and tourists. It offers visitors a glimpse into the traditional way of life in Sabah and offers the opportunity to learn about the region's diverse indigenous cultures. The market's location near the famous Tamparuli Suspension Bridge serves as a backdrop for this cultural experience, adding to its charm and making it a popular spot for visitors exploring the area.

Beyond the market, Tamparuli offers other attractions such as the Upside Down House (Rumah Terbalik), the Chanteek Borneo Indigenous Museum, and various hiking trails (e.g., Bukit Perahu) and ecotourism activities in the area.

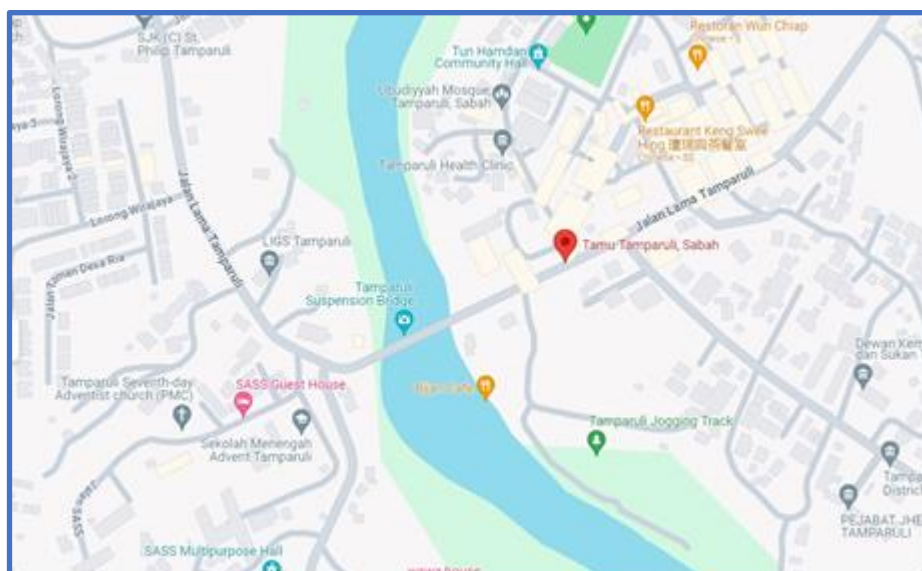


Figure 1: Location of Tamparuli Tamu

Glimpses of Tamparuli Tamu's Stunning Scenery



Photo 1: Traditional Elegance on Display



Photo 2: Vibrant Watermelon Stall



Photo 3: A Vibrant Tapestry of Nature's Beauty



Photo 4: Traditional Honey Harvest



Photo 5: Diverse Stalls Selling Fresh Local Goods



Photo 6: Local Farmers Showcasing a Variety of Fresh, Colourful Vegetables